

PRODUCT BULLETIN – PB-169 V2

Inverter Replacement – EH020 & REM025



Summary

As of October 1, 2023, Girbau has made a running change to the inverter of the EH020 & REM025. This change involves a new inverter design and software. For service of models manufactured before October 1st 2023 you will need the new inverter and the microprocessor (front display board) to be either updated with the latest version of software or to be replaced.

Models

Models affected – EH020, REM025, EM025

This change applies to all controls which include Logi Pro, Logi and Vended.

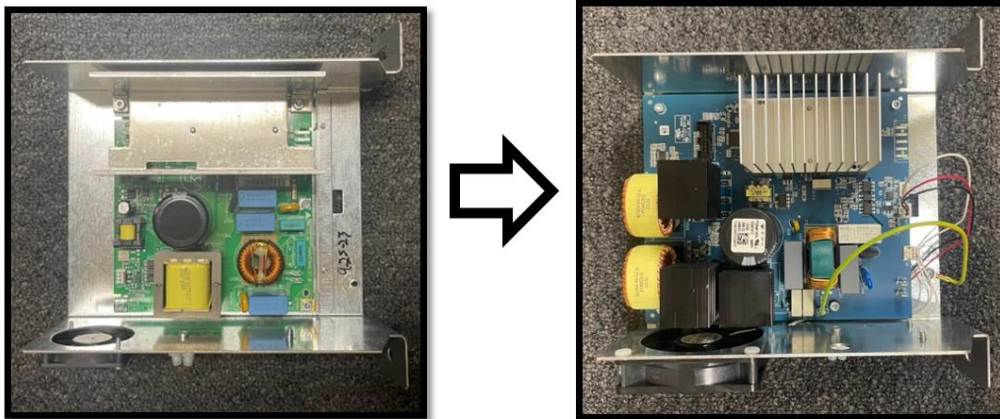
Serial Number Assignment

The last 3 digits in the serial number indicates when it was manufactured. The letter references the month and the last two numbers indicate the year.

- Third last digit in the serial number
 - A - January, B – February, C – March,...(I and L are not used)
- Last two digits in the serial number
 - 19 – 2019, 20 – 2020, 21 – 2021, 22 – 2022, 23 – 2023....
- Machines manufactured before xxxxxxxxK23 – October 2023, will need to have the software updated on the microprocessor prior too or when a new inverter is installed.

Inverter Changes

- The Danfoss (green color) inverter p/n 513663 on the models listed above has been replaced with an EGO inverter (blue color) (p/n 10467884).
- This inverter is a direct replacement. The EGO inverter fits in the same footprint as the Danfoss inverter.
- Part number 513663 will supersede to 10467884 when the old inverter is out of stock.



PRODUCT BULLETIN – PB-169 V2

Inverter Replacement – EH020 & REM025



Software

- All microprocessor's software, prior to October 2023, do not have the operating parameters for the EGO inverter loaded on it. As a result, the software will need to be updated using the GMP Tool.
- Software version can be read in the InFO menu of the machine and also on the back of the microprocessor.
- Microprocessors with a version lower than the required will need to either be updated with the GMP Tool or replaced.
- The EGO inverter requires the following minimum software:

Control Type	Microprocessor part number	Software Version
Vended Control	594515	62 or greater
LogiPro Control	521815	22 or greater

NOTE: Software version 62 or greater (Vended) and software version 22 or greater (LogiPro) is backwards compatible with the Danfoss inverters. This would allow you to proactively update software in the event the Danfoss inverter would need to be replaced in the future.

GMP Tool

The GMP Tool is software that allows technicians to update the software on all of Girbau manufactured commercial equipment. This tool was introduced to GNA's distribution with ST-156 on 11/22/2022.

The GMP Tool runs best on laptops with Windows 10 or Windows 11 that has limited firewalls. Administrator rights will be required upon the installation of the GMP Tool to the laptop.

Part Numbers

	Part needed	Software update required
Machines manufactured before Oct 2023 with software before V62 or V22	10467884 – Inverter kit	Yes
Machines manufactured after Oct 2023 with software version 62 or 22 or greater	10467884 – Inverter kit	No

Recommendations

To eliminate future additional service calls due to having to do software updates, if you visit a customer that has several machines it might be in the best interest of everyone to preemptively update all microprocessors.

*** Always follow the warnings and procedures in the corresponding equipment instruction manual.